



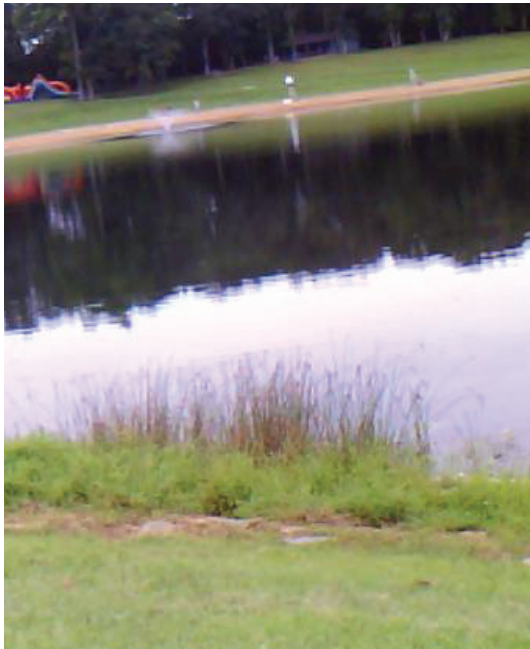




TRAIL

ACCESS INFORMATION

-  Hiking/Walking
-  Fishing (with license)
-  Playground
-  No Motorized Vehicles



Bicentennial Pond

Funded by:



thelastgreenvalley.org
DEEP Rec Trails Program

Bicentennial Pond Schoolhouse Brook Park

Mansfield, CT • Loop Trail

There are no fees for visiting the trail

Length	0.7 mi (1.1 km)
Elev Gain	62.9 ft (19.2 m)
Elev Loss	58.1 ft (17.7 m)

Parking & Trail Entrance

Directions to Bicentennial Pond Trail:

From Storrs Rd. (Route 195) in Storrs, take Clover Mill Rd., follow Clover Mill Rd. for 1.2 miles, turn right into Schoolhouse Brook Park. Bicentennial Pond Trail is located within the park.

Parking: There is parking for 15 – 20 cars with handicapped parking for 2 cars near the trailhead.

Grade

Typical Grade	3.4%
8% (281 ft) of trail is Scattered throughout the trail	8.4-12%
ADA Maximum Ramp Grade	8.3%

Cross Slope

Typical Cross Slope	3%
13.5% (447 ft) of trail is	5% to 12%

Tread Width

Typical	82 in
Minimum	60 in

Surface

Surface Type	Stone Dust
79.7% (2804 ft) of trail is	Firm
19.5% (686 ft) of trail is	Paved
0.8% (28 ft) of trail is	Hard

Obstructions

GRADE is 12% for about 25-30 ft. going clockwise around the trail (two-thirds of the way from start).

WARNING: Trail conditions may have changed since September 2021 when this trail was assessed. Temporary obstacles were not mapped.

OBSTRUCTIONS: Obstructions less than 2 in (5 cm) were not measured.